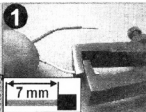


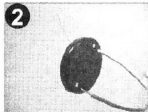
# Installationsanleitung

## Installation Instructions

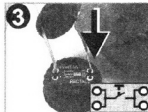
Verdrahtung  
Wiring



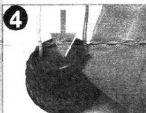
**1**  
Draht abisolieren (7 mm)  
Strip the wire (7 mm)



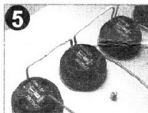
**2**  
Draht durch Dichtung stecken  
Insert wire into sealing



**3**  
Draht anschließen  
Connect wire



**4**  
Dichtung aufdrücken  
Fix the sealing



**5**  
Durchverdrahtung von Tastern  
Combination of pushes



**6**  
Entriegeln (mit beigef. Werkz.)  
Unlocking (with spec. tool)



**7**  
Draht anschließen (12V~/AC)  
Connect wire (12V~/AC)



**8**  
Keine Dichtung!  
No gasket!  
LED-Einheit festclipsen  
Fix the LED unit

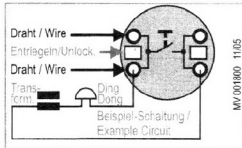


**9**  
Verdrahteter LED-Taster  
LED push incl. wiring

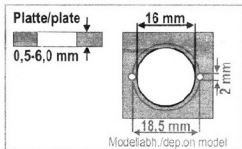
# PROTACT XXX

# TASTER

## PUSH BUTTON



MV 001800 11/05



### Techn. Dat.

- \* max. 24V~/~ (AC/DC)/1,5A (LED: 12V~/0,02A)
- \* Nur Schutzkleinspannung! Protect. low volt. only!
- \* Leiter starr/Wire rigid 0,6 - 0,8 mm
- \* Leiter flex/Wire flex.: Photo 6A: Erst entriegeln/Unlock
- \* -20°C...60°C / IP 54, Druckkraft/Op. force 5 N

### Grothe GmbH

Löhestraße 22 \* D-53773 Hennef  
Tel.: (0 22 42) 88 90-0 \* Fax: -36  
Internet: www.grothe.de

**GROTHE**  
an urmet company

LED-Beleuchtung  
LED-unit

